



GRAPHITE
BY
Pavane Jack

BEDROOM



140-150 Drawer Chest
38W x 18D x 52H



140-350 Nightstand
28W x 17D x 28H

GRAPHITE

BY
Panama Jack

The Panama Jack® Graphite Bedroom collection reflects a casual contemporary lifestyle; a relaxed modern design sensibility. Clean lines, simple moldings, and sleek profiles define these pieces. Rich texture is added in woven headboard and footboard accents seen in the Wood & Woven Panel Bed (*shown on cover*) and Woven Bed (*shown above*).

ALL BEDROOM CASES ARE DISCONTINUED

Graphite's touch of modern style adds beauty and function to any bedroom.

DINING ROOM



139-679 Credenza Sideboard (Quartz)
See below for details

139-633A Arm Chair (Quartz)
139-632S Side Chair (Quartz)
See opposite page for details

139-653 Rectangle Leg Table (Quartz)
See opposite page for details

The contemporary and casual feel of Graphite continues in our Dining collection. Rectangle Table with large sweeping cabriole legs, 18" leaf and matching sling-back Arm and slat-back Side Chairs provide the perfect place for entertaining friends or enjoying comfortable family gatherings. The Credenza Sideboard offers spacious storage to meet all your needs.

Design elements include the unique leg design on our Credenza Sideboard which complements its simple moldings. Nailhead trim on Arm Chairs and Polished Nickel plated custom hardware pulls are other design features that distinctly accentuate the finely executed Quartz finish.



139-679 Credenza Sideboard
68W x 19D x 34H

GRAPHITE

BY
Pavane Jack

All Graphite Dining Room pieces are offered in Quartz finish.
(Complete Dining Room product details are on Page 7.)



Wire-brushed Quarter Ash has an earthy milk Quartz finish that beautifully reveals the wood grain.



139-633A Arm Chair
24W x 22D x 38H

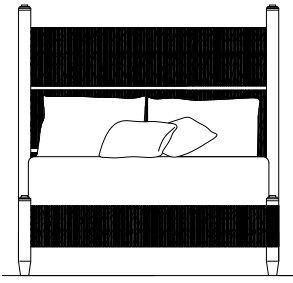


139-632S Side Chair
24W x 21D x 38H



139-653 Rectangle Leg Table
84/102W x 44D x 30H
Extends to 102" with one 18" leaf

DINING ROOM



**140-210/-211/-20R Wood & Woven Panel Bed
Headboard/Footboard/Bed Rails, Queen 5/0**
Overall: 64W x 89D x 66H

140-210 Wood & Woven Headboard Queen 5/0
63W x 3D x 66H

140-211 Wood & Woven Footboard Queen 5/0
63W x 3D x 20H

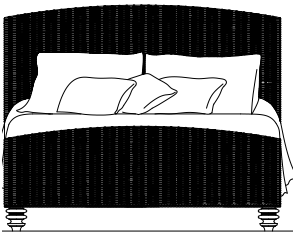
140-20R Bed Rails (5/0 & 6/6)
82W x 2D x 9H
Also available as
Queen Headboard only.

**140-220/-221/-20R Wood & Woven Panel Bed
Headboard/Footboard/Bed Rails, King 6/6**
Overall: 82W x 89D x 66H

**140-220 Wood & Woven Panel Headboard
King 6/6**
79W x 3D x 66H

**140-221 Wood & Woven Panel Footboard
King 6/6**
79W x 3D x 19H

140-20R Bed Rails (5/0-6/6)
82W x 2D x 9H
Also available as
King Headboard only.



**124-215/-216/-25R Grey Woven Bed
Headboard/Footboard/Bed Rails, Queen 5/0**
Overall: 64W x 89D x 55.5H

124-215 Grey Woven Headboard Queen 5/0
64W x 3D x 66H

124-216 Grey Woven Footboard Queen 5/0
64W x 3D x 19H

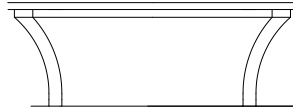
124-25R Bed Rails (5/0 & 6/6)
82W x 2D x 9H
Also available as
Queen Headboard only.

**124-225/-226/-25R Woven Bed
Headboard/Footboard/Bed Rails, King 6/6**
Overall: 82W x 89D x 56H

124-225 Woven Headboard King 6/6
80W x 3D x 60H

124-226 Woven Footboard King 6/6
80W x 3D x 23H

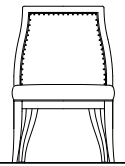
124-20R Bed Rails (5/0-6/6)
82W x 3D x 7H
Also available as
King Headboard only.



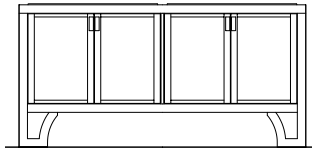
139-653 Rectangle Leg Table
84/102W x 44D x 30H
One 18" leaf



139-632S Side Chair
24W x 21D x 38H



139-633A Arm Chair
24W x 22D x 38H



139-679 Credenza Sideboard
68W x 19D x 34H
Four doors; One adjustable
shelf behind each set of doors;
One drawer behind left doors

OCCASIONAL TABLES

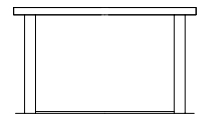
DISCONTINUED



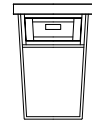
140-801 Cocktail Table
48W x 28D x 19H



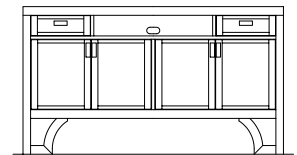
140-802 End Table
24W x 26D x 26H



140-803 Console Table
50W x 18D x 29H



140-827 Chairside Table
16W x 22D x 26H



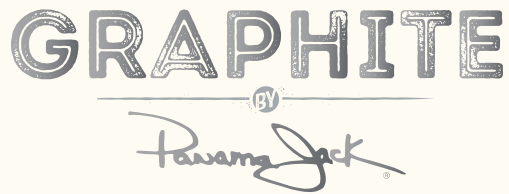
139-960 Entertainment Unit
60W x 20D x 34H

Two drawers; Open shelf space for electronics;
Four doors with two adjustable shelves behind



GRAPHITE
BY
Parsons Jack

Graphite casegoods design elements include inner picture frame moldings on drawer and door fronts. Polished Nickel plated hardware pulls accentuate the striated Quartz finish with multi-color gray undertones. Drawers also feature English Dovetail Box construction with full extension metal drawer guides for smooth operation.



FEATURES and BENEFITS

- Panama Jack Brand
 - Today's Contemporary Lifestyle
 - Bedroom, Dining Room & Occasional items
 - Solids: Hardwood
 - Veneer: Quarter Ash
 - Drawers: English Dovetail Drawer
Construction Plywood Sides;
Reinforced Veneer Bottoms;
Full Extension 35mm Metal Drawer Guides;
Sanded, Stained, and Sealed.
 - Larger cases include Anti-Tip Safety Features
 - Screwed on Back Panels
 - Finish: Wire brush QTR Ash
- Quartz with multi-color gray undertones
- Hardware: Sleek Metal Pulls with a
Soft Nickel Plated finish

Other Panama Jack Home Products

- Bedding by Westport Linens.
- Rugs by United Weavers.
- Glass Framed Art by GW Art.
- Lamps and Large Wall Art by Accessories Abroad.

PALMETTO
home
FURNITURE

1008 Hutton Lane, Suite 101
High Point, NC 27262
P 336.822.2780 | F 336.217.8161
PalmettoHome.com
Email: info@palmettohome.com

Many high quality, natural materials, such as wood, metal and/or stone, are used in our products and may reflect variations in color; vein and/or grain. These variations are inherent in their species. Finish colors displayed in this catalog may vary from actual finish. Palmetto Home uses materials resourced globally to ensure a quality product. Specifications are subject to change without notice.

Copyright Palmetto Home, LLC. Printed in the USA.

KC/VP/01-18